

Curlew Recovery Programme

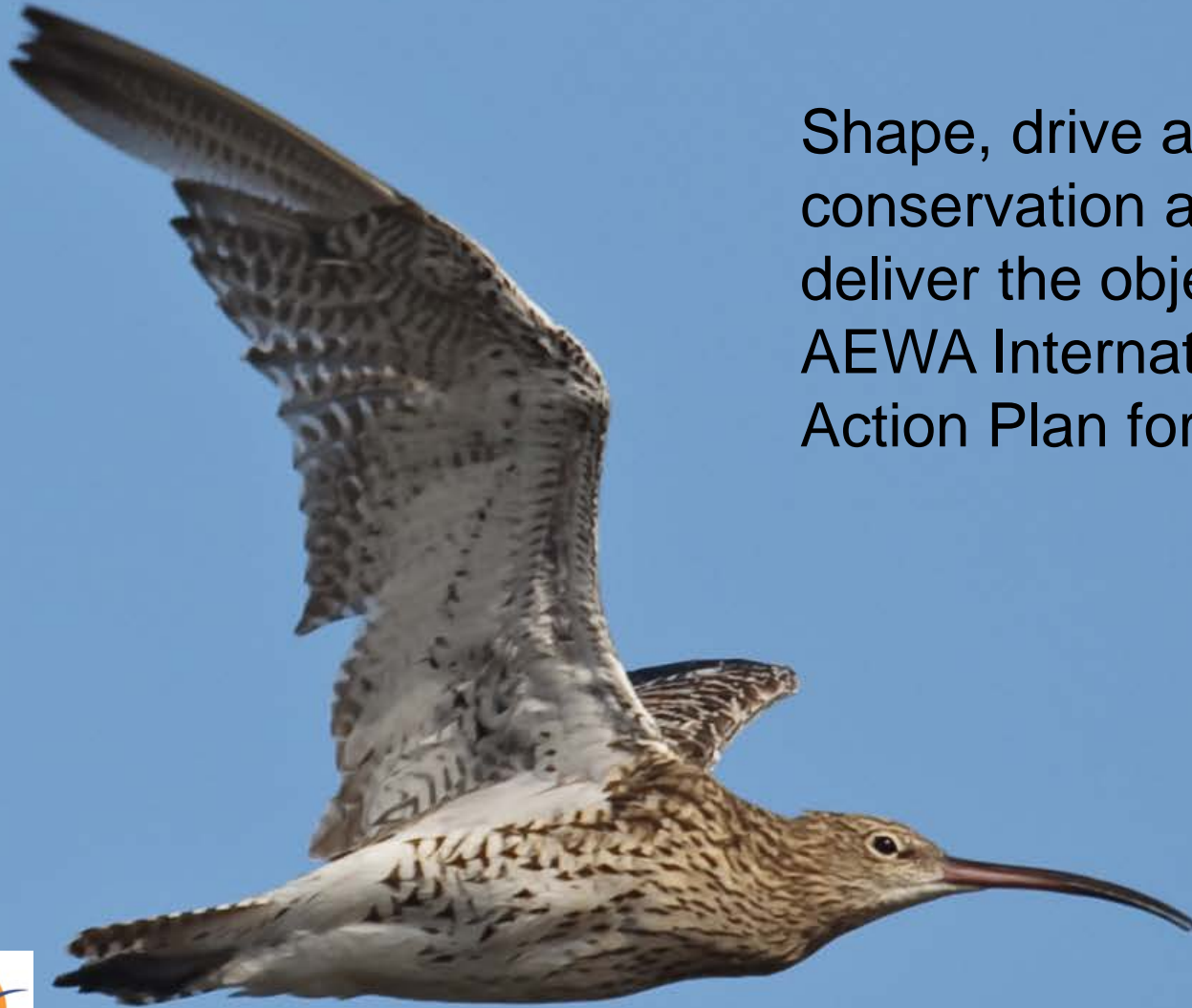
Sarah Sanders

Photo Credit: Gavin Thomas



UK & Ireland Curlew Action Group

Shape, drive and co-ordinate conservation action so as to deliver the objectives of the AEWA International Species Action Plan for Curlew





The RSPB's response

5 year programme, 2015
– 20, with the aim to
improve the conservation
prospects for curlew

Working across
landscapes through
partnerships





1. Strengthen our understanding of what needs to be done for curlew

Curlew Trial Management Project

***David Douglas and Pip Gullett
Norrie Russell, Gerry McAuley, Dan Brown, Steve Garnett, Danny Udall, Kim Strawbridge, Martin Clift, Fiona Walker, Neal Warnock***



Caithness

S Scotland

Geltsdale

Glenwherry

Peaks

N Wales Moors









What we can say so far...

- Curlew numbers increased on trial sites, but not enough data to draw conclusions
- Hatching success better this year, and fox numbers lower: potential link?
- PC does reduce fox & crow numbers on site
- Rush, dense veg & dwarf shrub all need managing



Informing Policy

- Working with land-managers/farmers through AES
- Ensuring AES continues post 2020 and has options for curlew





2. Site safeguards are in place to ensure sufficient breeding habitat

Ensuring adequate site protection – SPA Review

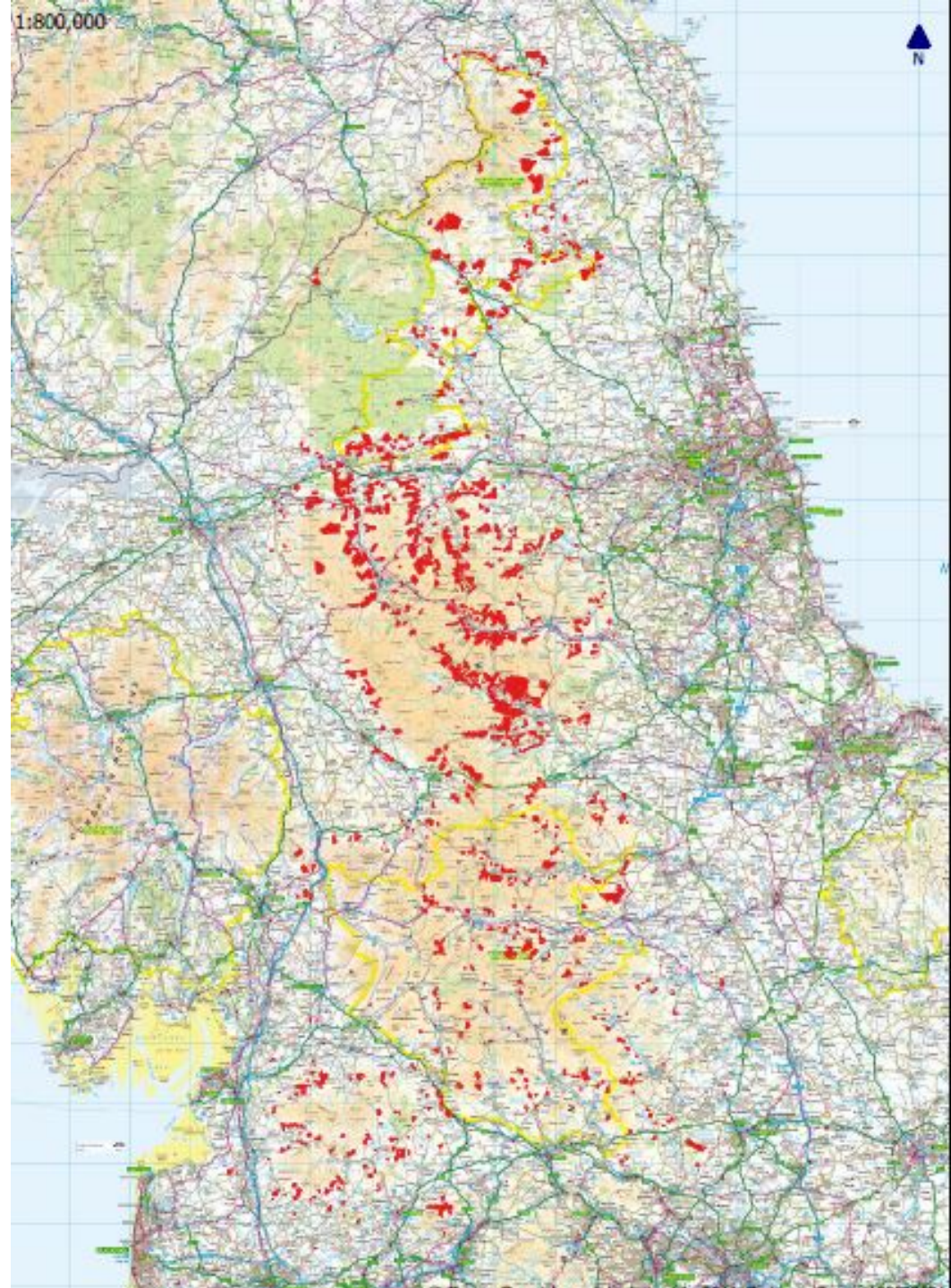
Guidelines for key sectors e.g. Forestry



3. Adopt a 'No-regrets' approach across the RSPB



Northern Upland Chain Local Nature Partnership



Map Credit: Abi Mansley NNP

4. Building support

- Wider public
- Farming community
- Decision makers



“We cannot lose the call of the curlew.”





giving
nature
a home

Thanks. Questions?

The RSPB is part of BirdLife International,
a partnership of nature conservation
organisations working to give nature a
home around the world.

